



### WindFarmer NEW 5.2

[www.gl-garradhassan.com](http://www.gl-garradhassan.com)



Wind farm design software - Maximum yield with minimum impact

- News
- Articles
- Videos
- Images
- Books
- Search ...
- Go
- Health & Medicine
- Mind & Brain
- Plants & Animals
- Earth & Climate
- Space & Time
- Matter & Energy
- Computers & Math
- Fossils & Ruins

## Science News

... from universities, journals, and other research organizations

- Save
- Email
- Print
- Share

## Better Turbine Spacing for Large Wind Farms

Feb. 7, 2011 — Large wind farms are being built around the world as a cleaner way to generate electricity, but operators are still searching for the most efficient way to arrange the massive turbines that turn moving air into power.

### Share This:

Like 44

Tweet 29

1

129

To help steer wind farm owners in the right direction, Charles Meneveau, a Johns Hopkins fluid mechanics and turbulence expert, working with a colleague in Belgium, has devised a new formula through which the optimal spacing for a large array of turbines can be obtained.

"I believe our results are quite robust," said Meneveau, who is the Louis Sardella Professor of Mechanical Engineering in the university's Whiting School of Engineering. "They indicate that large wind farm operators are going to have to space their turbines farther apart."

The newest wind farms, which can be located on land or offshore, typically use turbines with rotor diameters of about 300 feet. Currently, turbines on these large wind farms are spaced about seven rotor diameters apart. The new spacing model developed by Meneveau and Johan Meyers, an assistant professor at Katholieke Universiteit Leuven in Belgium, suggests that placing the wind turbines 15 rotor diameters apart -- more than twice as far apart as in the current layouts -- results in more cost-efficient power generation.

Meneveau presented the study results recently at a meeting of the American Physical Society Division of Fluid Dynamics. Meyers, co-author of the study, was unable to attend.

The research is important because large wind farms -- consisting of hundreds or even thousands of turbines -- are planned or already operating in the western United States, Europe and China. "The early experience is that they are producing less power than expected," Meneveau said. "Some of these projects are underperforming."

Earlier computational models for large wind farm layouts were based on simply adding up what happens in the wakes of single wind turbines, Meneveau said. The new spacing model, he said, takes into account interaction of arrays of turbines with the entire atmospheric wind flow.

Meneveau and Meyers argue that the energy generated in a large wind farm has less to do with horizontal winds and is more dependent on the strong winds that the turbulence created by the tall turbines pulls down from higher up in the atmosphere. Using insights gleaned from high-performance computer simulations as well as from wind tunnel experiments, they determined that in the correct spacing, the turbines alter the landscape in a way that creates turbulence, which stirs the air and helps draw more powerful kinetic energy from higher altitudes.

The experiments were conducted in the Johns Hopkins wind tunnel, which uses a large fan to generate a stream of air. Before it enters the testing area, the air passes through an "active grid," a curtain of perforated plates that rotate randomly and create turbulence so that the air moving through the tunnel more closely resembles real-life wind conditions.

Air currents in the tunnel pass through a series of small three-bladed model wind turbines mounted atop posts, mimicking an array of full-size wind turbines. Data concerning the interaction of the air currents and the model turbines is collected by using a measurement procedure called stereo particle-image-velocimetry, which requires a pair of high-resolution digital cameras, smoke and laser pulses.



In wind tunnel experiments at Johns Hopkins, air currents pass through a series of small model wind turbines mounted atop posts, mimicking an array of full-size wind turbines. (Credit: Will Kirk/JHU)

### Related Topics

- Matter & Energy**
  - Wind Energy
  - Construction
  - Energy and Resources
- Earth & Climate**
  - Renewable Energy
  - Energy and the Environment
  - Environmental Science
- Articles**
  - Power station
  - Wind turbine
  - Machine
  - Planetary boundary layer
  - Water turbine
  - Renewable energy

### WindFarmer NEW 5.2

[www.gl-garradhassan.com](http://www.gl-garradhassan.com)

Wind farm design software - Maximum yield with minimum impact



### Related Stories

- Localized Wind Power Blowing More Near Homes, Farms and Factories** (Aug. 6, 2013) — A new report details how more Americans are installing wind turbines near their homes, businesses and farms to generate their own energy as part of a growing field of wind power called distributed ... > [read more](#)
- Using Fluctuating Wind Power** (Mar. 25, 2013) — Incorporating wind power into existing power grids is challenging because fluctuating wind speed and direction means turbines generate power inconsistently. Coupled with customers' varying power ... > [read more](#)
- Toward Super-Size Wind Turbines: Bigger Wind Turbines Do Make Greener Electricity** (June 20, 2012) — In a study that could solidify the trend toward construction of gigantic windmills, scientists have concluded that the larger the wind turbine, the greener the electricity it ... > [read](#)

Interested in ad-free access? If you'd like to read ScienceDaily without ads, [let us know!](#)

**Just In:**  
 Newly Discovered Ocean Plume Spewing Iron  
 ▶ [more breaking science news](#)

### Social Networks

Follow ScienceDaily on **Facebook**, **Twitter**, and **Google**:

Facebook    Twitter    Google+

Recommend ScienceDaily on **Facebook**, **Twitter**, and **Google +1**:

Like 66k    Tweet 27.3K    9.2k

Other social bookmarking and sharing tools: 95.8K

### Breaking News

- Archaeologists race to save Gaza's ancient ruins
- Egypt's devastating museum looting latest casualty
- Volcanic eruption coats Japanese city with ash
- SF Bay Area building demolition fuels quake study
- 2 Russians turn cable guys in record spacewalk
- NASA calls off attempts to fix Kepler space telescope
- Report: Puerto Rican parrot makes major comeback
- Introducing the olinguito, the newest mammal discovery
- [more science news](#)
- In Other News ...**  
Iraq sets quota for

Further research is needed, Meneveau said, to learn how varying temperatures can affect the generation of power on large wind farms. The Johns Hopkins professor has applied for continued funding to conduct such studies.

Share this story on [Facebook](#), [Twitter](#), and [Google](#):

Like 44 Tweet 29 1

Other social bookmarking and sharing tools:

129

Story Source:

The above story is based on materials provided by Johns Hopkins University, via EurekAlert!, a service of AAAS.

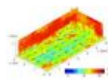
Note: Materials may be edited for content and length. For further information, please contact the source cited above.

Need to cite this story in your essay, paper, or report? Use one of the following formats:

- APA Johns Hopkins University (2011, February 7). Better turbine spacing for large wind farms. ScienceDaily. Retrieved August 20, 2013, from http://www.sciencedaily.com/releases/2011/01/110120111332.htm
- MLA ScienceDaily. Retrieved August 20, 2013, from http://www.sciencedaily.com/releases/2011/01/110120111332.htm

Note: If no author is given, the source is cited instead.

more



Optimizing Large Wind Farms

(Nov. 25, 2010) — Researchers have developed a model to calculate the optimal spacing of wind turbines for the very large wind farms of the ... > read more



Answers To Huge Wind-Farm Problems Are Blowin' In The Wind

(Dec. 17, 2008) — While harnessing more energy from the wind could help satisfy growing demands for electricity and reduce emissions of global-warming gases, turbulence from proposed wind farms could adversely affect ... > read more

Torishima Europe Projects

www.torishimaprojects.co.uk Steam and Hot Water Renewables Efficient Steam & Hot Water Systems



Wind Turbine

Made-in-China.com Professional Wind Turbine Supplier. High Quality, Competitive Price.



Passivhaus design

greentomatoenergy.com Call for Passivhaus design services Reduce energy bills by up to 90%



Syrian refugees: aid agencies

Divisive trial in China may start early, with secret session

Afghan attorney-general retains post despite presidential anger

Muslim Rohingya asylum seekers escape Thai detention centre

1st portraits of Prince George are a family affair U.N. fails to bridge Israeli-Arab divide on nuclear-free region

Syrian Kurds battle al-Qaida-linked rebel faction

Ousted China leader's trial caps dramatic downfall

more top news

Wind Turbine

Made-in-China.com Professional Wind Turbine Supplier. High Quality, Competitive Price.



Torishima Europe Projects

www.torishimaprojects.co.uk Steam and Hot Water Renewables Efficient Steam & Hot Water Systems



Wind Turbines For Sale

www.pjwindpower.com P&J Windpower is supplier of second-hand wind turbines



Search ScienceDaily

Number of stories in archives: 141,342

Find with keyword(s): [input] Search

Enter a keyword or phrase to search ScienceDaily's archives for related news topics, the latest news stories, reference articles, science videos, images, and books.

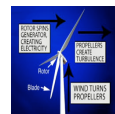
Recommend ScienceDaily on Facebook, Twitter, and Google:

Like 44 Tweet 29 1

Other social bookmarking and sharing services:

95.8K

Science Video News



Wind Farms Impacting Weather

Wind farms may have an impact on local weather patterns. As environmental engineers have discovered, wind farm propellers create a lot of turbulence. ... > full story

Mechanical Engineers' Device Helps Electricity Conservation

Meteorologists, Atmospheric Scientists Fly Through Storms to Gather Data

Atmospheric Scientists Map Pollution Decrease

Strange Science News

Earliest Known Iron Artifacts Come from Outer Space

LSD and Other Psychedelics Not Linked With Mental Health Problems

Computer Can Read Letters Directly from the Brain

Global Sea Level Rise Dampened by Australia Floods

Waking Up to a New Year: Exoplanet Orbits Its Star in 8.5 Hours

more strange science news

Free Subscriptions ... from ScienceDaily

Get the latest science news with our free email newsletters, updated daily and weekly. Or view hourly updated newsfeeds in your RSS reader:

- Email Newsletters
- RSS Newsfeeds

Feedback ... we want to hear from you!

Tell us what you think of ScienceDaily -- we welcome both positive and negative comments.

Have any problems using the site? Questions?  
[Leave Feedback](#)

---

 Save  Email  Print  Share

*About ScienceDaily® | Editorial Staff | Awards & Reviews | Contribute News | Advertise With Us | Contact Us | Privacy Policy | Terms of Use  
Copyright 2013 by ScienceDaily, LLC or by third-party sources, where indicated. All rights controlled by their respective owners.  
Content on this website is for informational purposes only. It is not intended to provide medical or other professional advice.  
Views expressed on this website do not necessarily reflect those of ScienceDaily, its staff, or its partners.*